

**Student Name:** \_\_\_\_\_ **Form:** \_\_\_\_\_



# Representation

## School Assessed Coursework

**Writing Time:** 100 minutes

Question and Answer Booklet

**Conditions**

- Students may bring pens, pencils and erasers into the assessment task.
- Students are not permitted to bring notes into this assessment task.
- Mobile phones, calculators and other electronic devices are prohibited.

1. What is a code?

---

---

---

---

2 marks

2. What is a convention?

---

---

---

---

2 marks

3. What is a representation?

---

---

---

---

2 marks

4. Describe the possible connotations of the signs listed in the below table.

Sign	Connotations
Snake	
Heart	
Key	
Knife	
Lion	
Rose	

3 marks

5. Explain why media representations are different to reality.

---

---

---

---

---

---

---

---

---

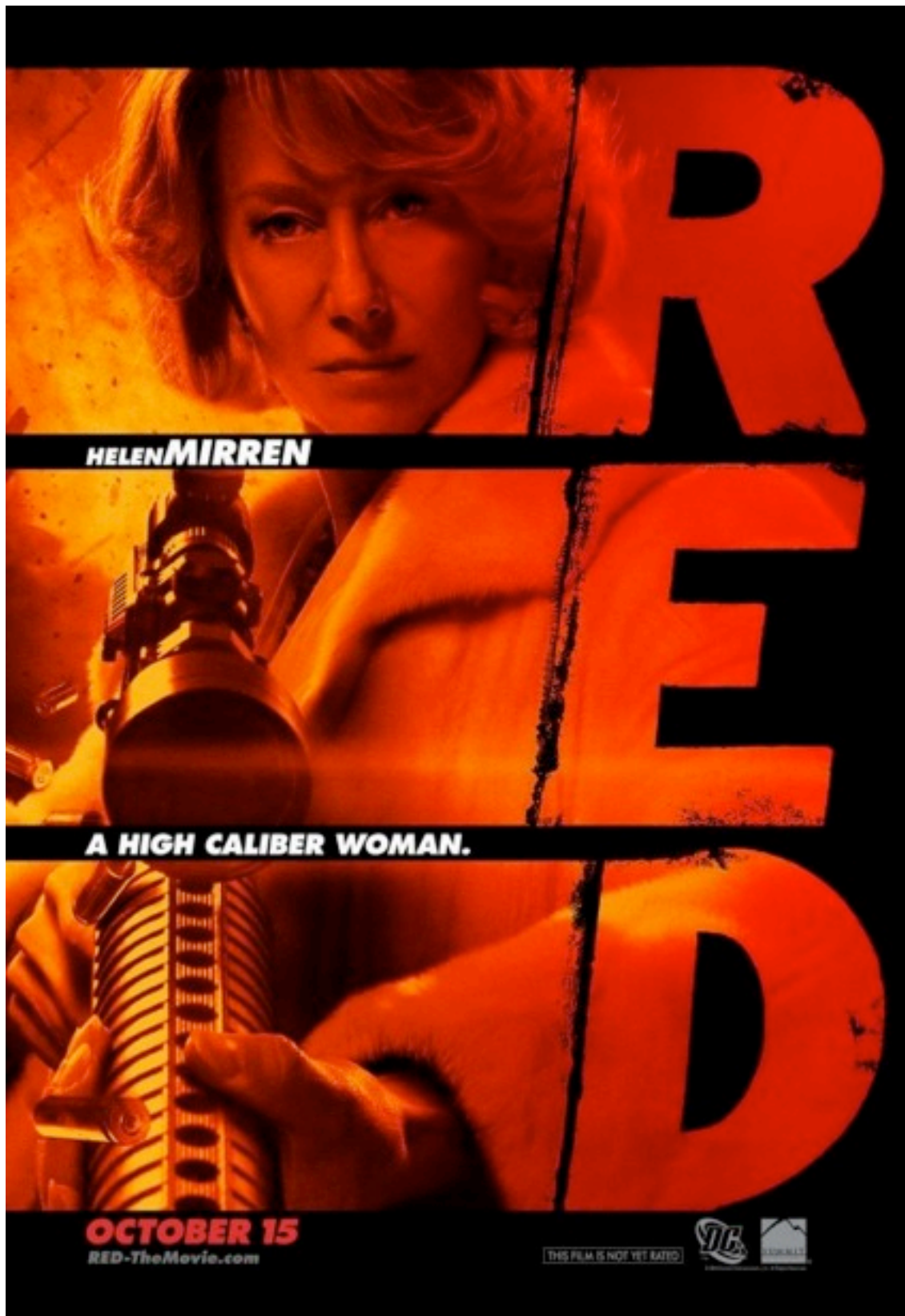
---

4 marks

*The Creature from the Black Lagoon*, director Jack Arnold, 1954.



*RED*, director Robert Schwentke, 2010.





6. Compare how gender was represented differently in the movie posters shown on the previous two pages. Your response should make reference to appropriate codes and conventions.

---

---

---

---

---

---

---

---

---

---

---

---

---

---

---

---

---

---

---

---

---

---

---

---

8 marks



# *Put time back in your day.*



**Quick and easy Pine O Clean wipes. They're thick and strong to clean even tough mess in one swipe – and kill 99.9% of germs:**

\*Kills germs such as Salmonella and E.coli. Always read the label, use only as directed.



7. Describe how gender is represented in the two advertisements on the previous pages. Your response should make reference to appropriate codes.

---

---

---

---

---

---

---

---

---

---

4 marks

8. Describe a gender stereotype commonly used in television advertisements.

---

---

---

---

---

2 marks

9. Describe one advertisement you studied this year that featured the stereotype identified in the previous question.

---

---

---

---

---

---

---

---

---

---

4 marks



11. Give three examples of the Manic Pixie Dream Girl trope.

- a. \_\_\_\_\_
- b. \_\_\_\_\_
- c. \_\_\_\_\_

3 marks

12. Describe the Manic Pixie Dream Girl stereotype.

---

---

---

---

---

---

---

---

---

---

4 marks

13. What are some of the problems with the Manic Pixie Dream Girl stereotype?

---

---

---

---

---

---

---

---

---

---

4 marks